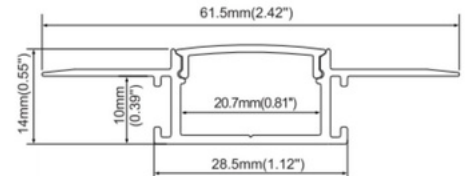
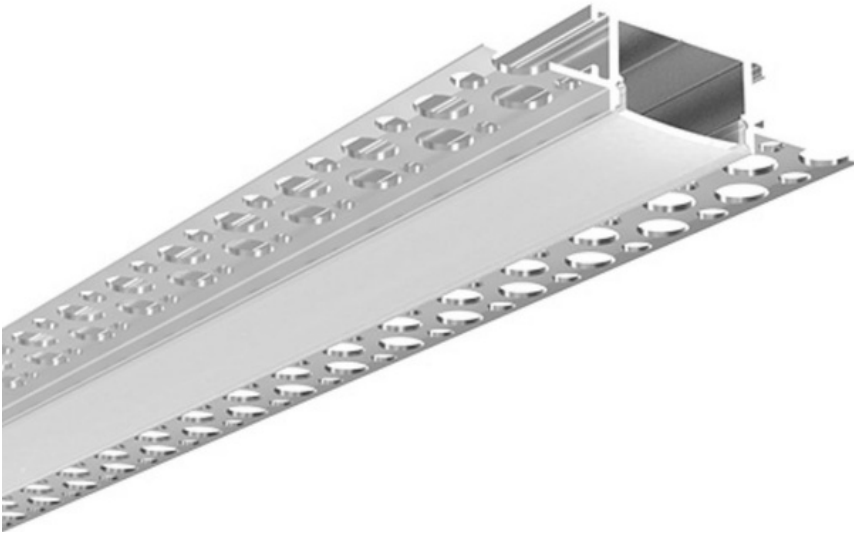


LED DRYWALL EXTRUSION

AL71 - Linear Wide



Transform your drywall lighting with Zortech LED's AL71 wide linear aluminum extrusion. Seamlessly integrate LED strips for a contemporary and efficient lighting solution that adds both style and versatility to any space.

Features

- 61.5mm by 14mm, 28.5mm wide visible
- Anodized aluminum finish
- Powder coating available for an additional cost
- Compatible with 12.5mm drywall
- Suitable with most flexible or hard LED Strips
- Available with Opal Matte cover
- Mounting Options: Drywall

Lens Options



LED Engine Compatibility

Compatible with LED strips up to 10mm wide

Mounting Options

12.5mm Drywall

