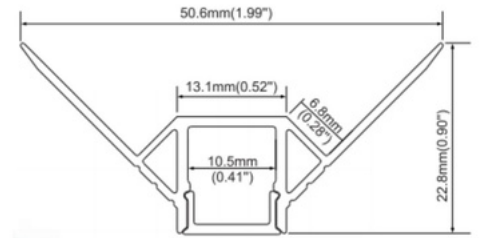
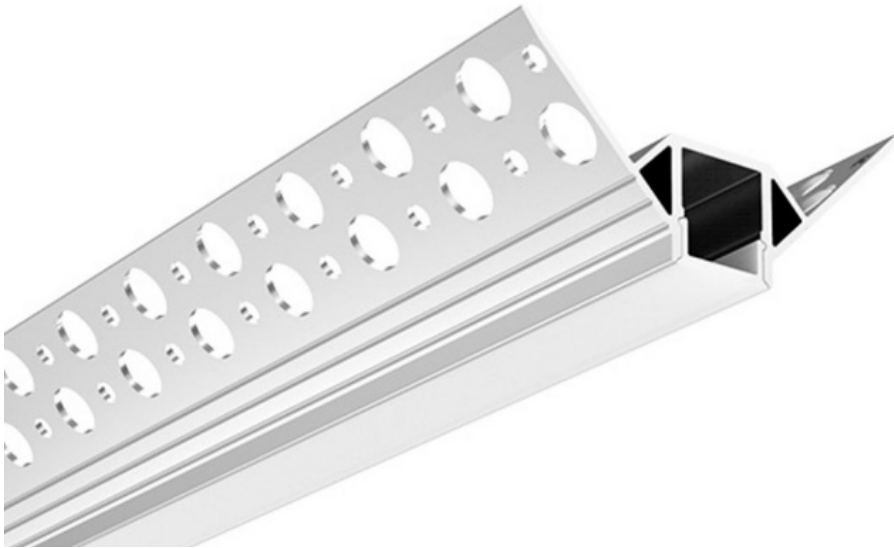


# LED DRYWALL EXTRUSION

## AL70 - Outside Corner



Elevate your drywall lighting with Zortech LED's AL70 outside corner aluminum extrusion. Seamlessly integrate LED strips for a polished and modern lighting solution that adds both style and functionality to exterior corners.

### Features

- 50.6mm by 22.8mm, 13mm wide visible
- Anodized aluminum finish
- Powder coating available for an additional cost
- Compatible with 12.5mm drywall
- Suitable with most flexible or hard LED Strips
- Available with Opal Matte cover
- Mounting Options: Drywall

### Lens Options



### LED Engine Compatibility

Compatible with LED strips up to **10mm** wide

### Mounting Options

12.5mm Drywall

