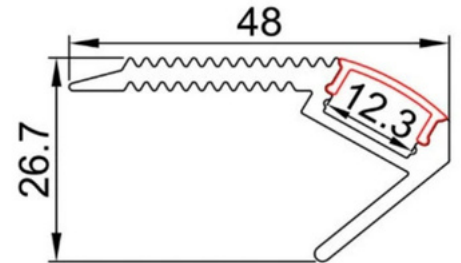
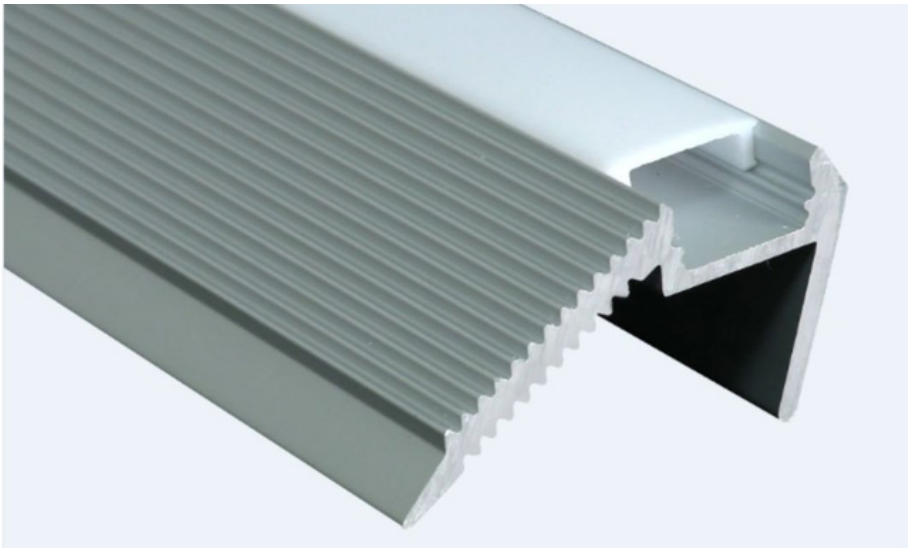


# LED STAIR NOSING EXTRUSION

AL22



Step into sophisticated lighting with Zortech LED's AL22 stair nosing aluminum extrusion. Seamlessly incorporate LED strips for a sleek and practical lighting solution that adds safety and style to staircases.

## Features

- 48mm wide, 26.7mm deep
- Anodized aluminum finish
- Powder coating available for an additional cost
- Best for stair and safety lighting
- Suitable with most flexible or hard LED Strips
- Available with Opal Matte, Clear, or Semi-Clear cover
- Mounting Options: Plastic or Metal Clips, Magnets, Swivel Clips, VHB, and Suspended Steel Wire

## Lens Options



## LED Engine Compatibility

Compatible with LED strips up to 12mm wide

## Mounting Options

