

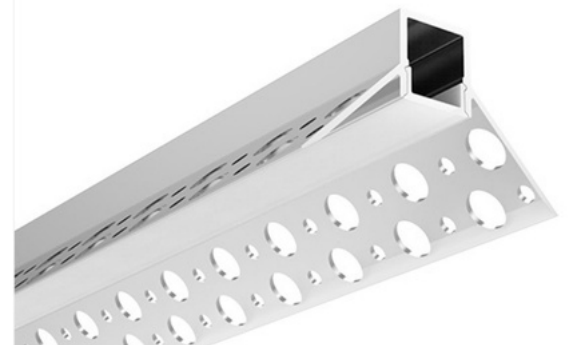
NEW

# DRYWALL SERIES

## 851169-FS180-VDC



Powered by the standard 2216 super small SMD LED Chip, this flexible LED is great for general lighting applications. Available in a wide range of whites and multiple voltages.



Illuminate with Zortech LED's DOVER kit, featuring the FS180 (2216 SMD LED, 180 LED/m) strip and AL69 aluminum extrusion. Seamlessly merge high-density illumination with the AL69 extrusion's inside corner design for a modern lighting solution that adds both style and versatility to any environment.

- Standard Opal Matte Cover, other options available
- Comes with 2 end caps, compatible with 12.5mm drywall
- Variety of lead and wire options, at additional cost

Colour Temperature (K)



- ▲ 2700K
- ▲ 3000K
- ▲ 3500K
- ▲ 4000K
- ▲ 5000K

### Product Details

Part Number	FS180
Width	10mm wide, 5m spool
LED Count/m	180 LEDs/m (FS180)
Cuttable Length	17mm (FS180 12 VDC) 35mm (FS180 24 VDC)
CRI	>90+ (FS180)
IP Rating	IP20, IP65, IP67, IP68
Lifespan	50,000 hours (with recommended mounting to metal or glass surface)

Lumens 1200 lms/m (FS180)

### Electrical

Input Voltage 12 VDC (Standard)  
24 VDC (Standard)

Power Consumption 14.4 W/m (FS180)

Wire Barrel, Locking Tab, Small Locking Tab, Blunt Wire