

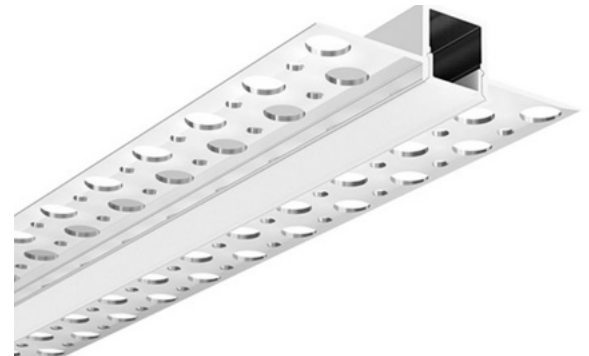
NEW

DRYWALL SERIES

851168-FS180-VDC



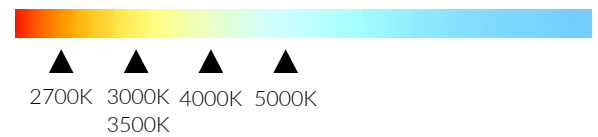
Powered by the standard 2216 super small SMD LED Chip, this flexible LED is great for general lighting applications. Available in a wide range of whites and multiple voltages.



Elevate your lighting design with Zortech LED's DECEWS kit, featuring the FS180 (2216 SMD LED, 180 LED/m) strip and AL68 aluminum extrusion. Seamlessly blend high-density illumination with the AL68 extrusion for a captivating lighting solution that adds both style and efficiency to any space.

- Standard Opal Matte Cover, other options available
- Comes with 2 end caps, compatible with 12.5mm drywall
- Variety of lead and wire options, at additional cost

Colour Temperature (K)



Product Details

Part Number	FS180
Width	10mm wide, 5m spool
LED Count/m	180 LEDs/m (FS180)
Cuttable Length	17mm (FS180 12 VDC) 35mm (FS180 24 VDC)
CRI	>90+ (FS180)
IP Rating	IP20, IP65, IP67, IP68
Lifespan	50,000 hours (with recommended mounting to metal or glass surface)

Lumens 1200 lms/m (FS180)

Electrical

Input Voltage 12 VDC (Standard)
24 VDC (Standard)

Power Consumption 14.4 W/m (FS180)

Wire Barrel, Locking Tab, Small Locking Tab, Blunt Wire

