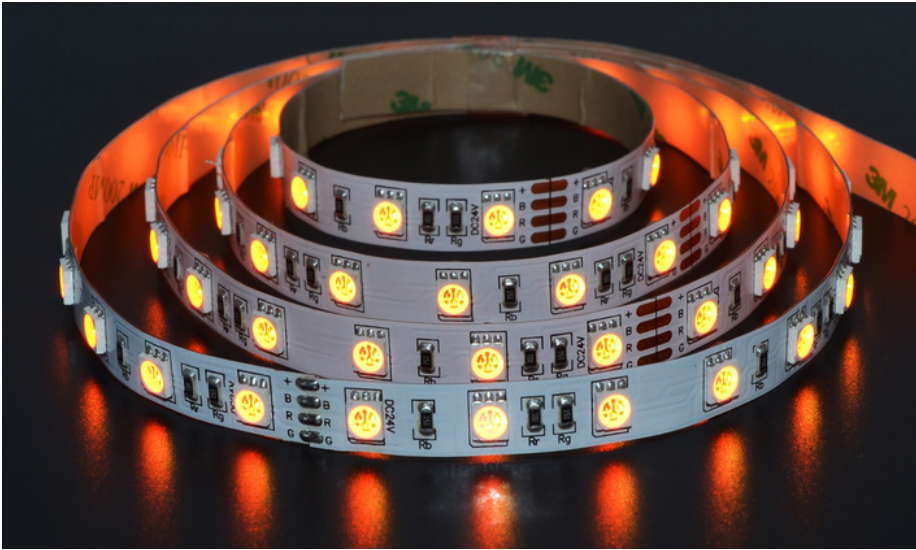


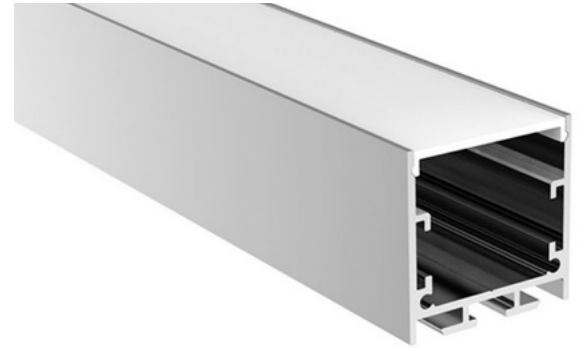
NEW

AL18 SERIES

851118-RGBW60-VDC



Powered by the standard 5050 SMD LED Chip, this flexible LED is great for general lighting applications. Available in a wide range of colours and multiple wattages.



Experience the brilliance of Zortech LED's AL18 kit, featuring the RGBW60 (5050 SMD LED, 60 LED/m) strip and AL18 aluminum extrusion. Effortlessly combine versatile colourful RGBW LED illumination with the sleek AL18 extrusion's low ceiling design for a stunning lighting solution that adds both style and efficiency to any setting.

- Standard Semi-Clear (Frosted) Cover, other options available
- Comes with 2 end caps and 2 mounting clips, other mounting options are available upon request
- Variety of lead and wire options, at additional cost

Colour Temperature (K)



▲ 2500K ▲ 3000K ▲ 4000K ▲ 6000K

RGBW Colour Spectrum



Lens Options



Mounting Options



Product Details

Part Number	RGBW60
Width	12mm wide, 5m spool
LED Count/m	60 LED/m (RGBW60)
Cutable Length	200mm (RGBW60)
CRI	>70+ (RW60)
IP Rating	IP20, IP65, IP67, IP68
Lifespan	50,000 hours (with recommended mounting to metal or glass surface)

Lumens R60/G120/B75/W495
lms/m (RGBW60)

Electrical

Input Voltage 24 VDC (Standard)

Power Consumption 14.4 W/m (RGBW60)

Wire Locking Tab, Small Locking Tab, Blunt Wire