

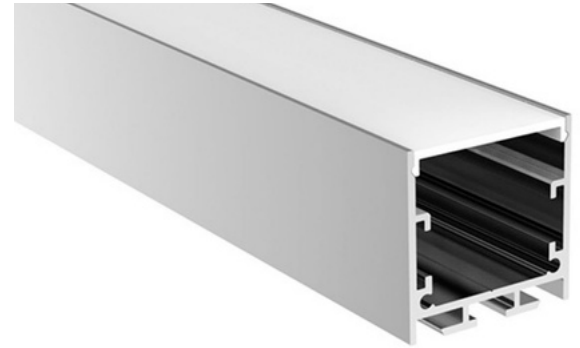
NEW

# AL18 SERIES

## 851118-FS180-VDC



Powered by the standard 2216 super small SMD LED Chip, this flexible LED is great for general lighting applications. Available in a wide range of whites and multiple voltages.



Experience the brilliance of Zortech LED's AL18 kit, featuring the FS180 (2216 SMD LED, 180 LED/m) strip and AL18 aluminum extrusion. Effortlessly combine high density LED illumination with the sleek AL18 extrusion's low ceiling design for a stunning lighting solution that adds both style and efficiency to any setting.

- Standard Semi-Clear (Frosted) Cover, other options available
- Comes with 2 end caps and 2 mounting clips, other mounting options are available upon request
- Variety of lead and wire options, at additional cost

Colour Temperature (K)



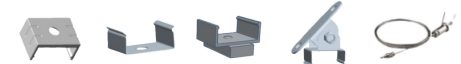
▲   ▲   ▲   ▲

2700K   3000K   4000K   5000K  
3500K

### Lens Options



### Mounting Options



### Product Details

Part Number	FS180
Width	10mm wide, 5m spool
LED Count/m	180 LEDs/m (FS180)
Cutttable Length	17mm (FS180 12 VDC) 35mm (FS180 24 VDC)
CRI	>90+ (FS180)
IP Rating	IP20, IP65, IP67, IP68
Lifespan	50,000 hours (with recommended mounting to metal or glass surface)

Lumens                    1200 lms/m (FS180)

### Electrical

Input Voltage            12 VDC (FS180)  
24 VDC (FS180)

Power Consumption     14.4 W/m (FS180)

Wire                        Barrel, Locking Tab, Small Locking Tab, Blunt Wire