

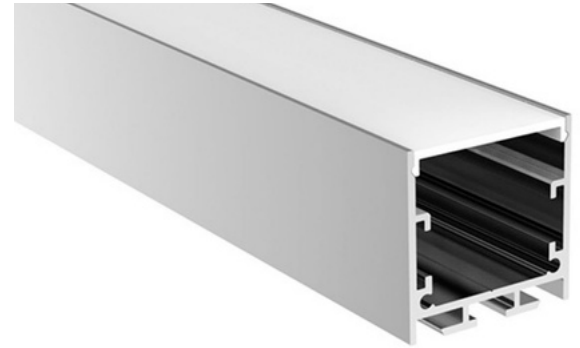
NEW

AL18 SERIES

851118-FL60-VDC



Powered by the standard 5050 standard SMD LED Chip, this flexible LED is great for general lighting applications. Available in a wide range of whites and multiple voltages.



Experience the brilliance of Zortech LED's AL18 kit, featuring the FL60 (5050 SMD LED, 60 LED/m) strip and AL18 aluminum extrusion. Effortlessly combine LED illumination with the sleek AL18 extrusion's low ceiling design for a stunning lighting solution that adds both style and efficiency to any setting.

- Standard Semi-Clear (Frosted) Cover, other options available
- Comes with 2 end caps and 2 mounting clips, other mounting options are available upon request
- Variety of lead and wire options, at additional cost

Colour Temperature (K)

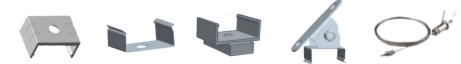


- ▲ 2200K
- ▲ 2700K
- ▲ 3000K
- ▲ 3500K
- ▲ 4000K
- ▲ 4500K
- ▲ 5000K

Lens Options



Mounting Options



Product Details

Part Number	FL60, FL60 CC
Width	10mm wide, 5m spool
LED Count/m	60 LED/m (FL60, FL60 CC)
Cutable Length	50mm (FL60, FL60 CC)
CRI	>80+ (FL60 CC) >90+ (FL60)
IP Rating	IP20, IP65, IP67, IP68
Lifespan	50,000 hours (with recommended mounting to metal or glass surface)

Lumens	1000 lms/m (FL60) 1200 lms/m (FL60 CC)
--------	---

Electrical

Input Voltage	12 VDC (Standard) 24 VDC (Standard, FL60 CC)
---------------	---

Power Consumption	14.4 W/m (FL60) 12 W/m (FL60 CC)
-------------------	-------------------------------------

Wire	Barrel, Locking Tab, Small Locking Tab, Blunt Wire
------	--

