

# Solar Panel 340W

## Specification Sheet

# 120022



## MANAGEMENT SYSTEM CERTIFICATES

ISO 9001:2015 / Quality management system  
 ISO 14001:2015 / Standards for environmental management systems  
 OHSAS 18001:2007 / International standards for occupational health & safety

## PRODUCT CERTIFICATES

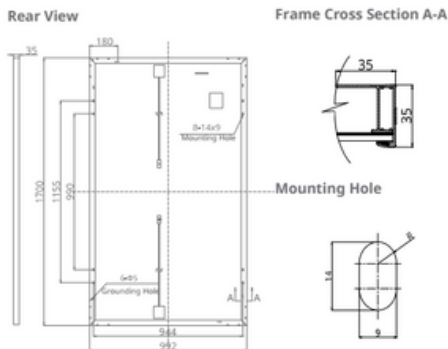
IEC 61215 / IEC 61730: VDE / CE / MCS  
 UL 1703 / IEC 61215 performance: CEC listed (US) / FSEC (US Florida)  
 UL 1703: CSA / IEC 61701 ED2: VDE / IEC 62716: VDE  
 Take-e-way



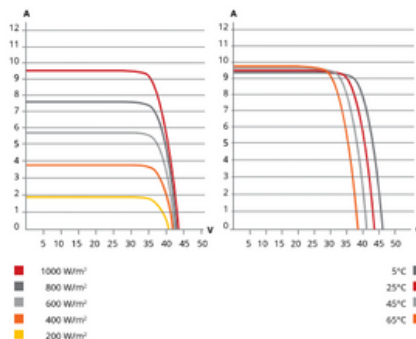
## CANADIAN SOLAR INC.

is committed to providing high quality solar products, solar system solutions and services to customers around the world. No. 1 module supplier for quality and performance/price ratio in IHS Module Customer Insight Survey. As a leading PV project developer and manufacturer of solar modules with over 38 GW deployed around the world since 2001.

## ENGINEERING DRAWING (MM)



## CS1H-330MS / I-V CURVES



HiDM-Black  
 All-Black high density MONO PERC module  
 320 W ~ 340W  
 CS1H-320|325|335|340MS

## MORE POWER

- Maximize the light absorption area module efficiency up to 20.16%
- Low temperature coefficient (Pmax): -0.37% / °C
- Better shading tolerance

## MORE RELIABLE

- Lower internal current, lower hot spot temperature
- Cell crack risk limited in small region, enhance the module reliability
- Heavy snow load up to 5400 Pa, wind load up to 2400 Pa

## WORKING ENVIRONMENT

- 15 Years enhanced product warranty on materials and workmanship
- 25 Years linear power output warranty

According to the applicable Canadian Solar Limited Warranty Statement

# Solar Panel 340W

## Specification Sheet

# 120022



### ELECTRICAL DATA | STC\*

CSIH	320MS	325MS	330MS	335MS	340MS
Nominal Max. Power (Pmax)	320W	325W	330W	335W	340W
Opt. Operating Voltage (Vmp)	36.2V	36.6V	37.0V	37.4V	37.8V
Opt. Operating Current (Imp)	8.85A	8.88A	8.92A	8.96A	9.00A
Open Circuit Voltage (Voc)	44.0V	44.1V	44.2V	44.3V	44.5V
Short Circuit Current (Isc)	9.41A	9.45A	9.49A	9.53A	9.57A
Module Efficiency	19.98%	19.27%	19.57%	19.86%	20.16%
Operating Temperature	-40°C ~ +85°C				
Max. System Voltage	1000V (IEC/UL)				
Module Fire Performance	Type 1 (UL 1703) or CLASS C (IEC 61730)				
Max. Series Fuse Rating	15 A				
Application Classification	Class A				
Power Tolerance	0 ~ + 5 W				

\*Under Standard Test Conditions (STC) of irradiance of 1000 W/m<sup>2</sup>, spectrum AM 1.5 and cell temperature of 25°C

### ELECTRICAL DATA | NMOT\*

CSIH	320MS	325MS	330MS	335MS	340MS
Nominal Max. Power (Pmax)	236W	240W	243W	247W	251W
Opt. Operating Voltage (Vmp)	33.4V	33.7V	34.1V	34.5V	34.8V
Opt. Operating Current (Imp)	7.07A	7.11A	7.14A	7.17A	7.20A
Open Circuit Voltage (Voc)	41.0V	41.1V	41.2V	41.3V	41.5V
Short Circuit Current (Isc)	7.60A	7.63A	7.66A	7.70A	7.73A

\*Under Nominal Module Operating Temperature (NMOT) of irradiance of 800 W/m<sup>2</sup>, spectrum AM 1.5 and ambient temperature of 20°C, wind speed 1 m/s

The specifications and key features contained in this datasheet may deviate slightly from our actual products due to the on-going innovation and product enhancement. Canadian Solar Inc. reserves the right to make necessary adjustment to the information described herein at any time without further notice.

Please be kindly advised the PV modules should be handled and installed by qualified people who have professional skills and please carefully read the safety and installation instructions before using our PV modules.

### MECHANICAL DATA

Specification	Data
Cell Type	Mono-crystalline
Dimensions	1700x992x35 mm (66.9x39.1x1.38 in)
Weight	19.2 kg (42.3lbs)
Front Cover	3.2mm tempered glass
Frame	Anodized aluminium alloy
J-Box	IP68, 3 bypass diodes
Cable	4.0mm <sup>2</sup> (IEC), 12 AWG (UL)
Cable Length (Including Connector)	1350mm (53.1 in)
Connector	T4 series or H4 UTX or MC4-EVO2
Per Pallet	30 pieces
Per Container (40' HQ)	780 pieces

### TEMPERATURE CHARACTERISTICS

Specification	Data
Temperature Coefficient (Pmax)	-0.37% / °C
Temperature Coefficient (Voc)	-0.29% / °C
Temperature Coefficient (Isc)	0.05% / °C
Nominal Module Operating Temperature	44+3 °C